

aquatic invertebrate match!

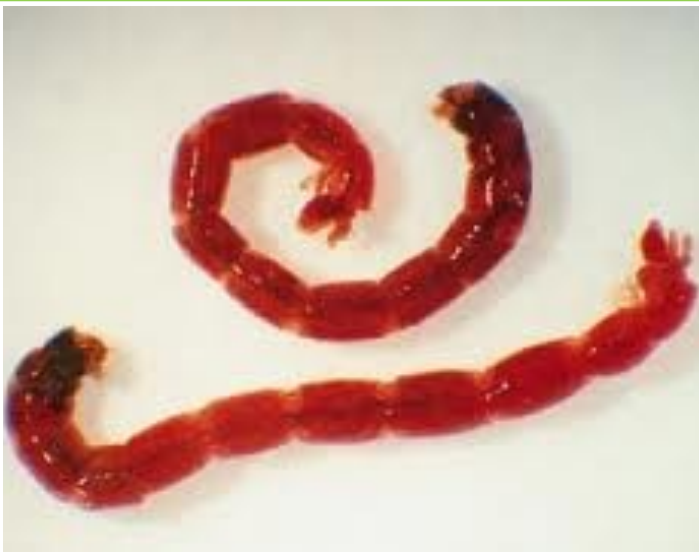
- **Students will match the adult invertebrate to its larval or nymph counterpart through a game of memory.**
- **Preparation – print the cards (cardstock can be used if preferred), cut the squares apart, laminate if desired.**
- **Students should start with the cards shuffled and placed face down in a rectangular grid on their desks.**
- **The student turns over any two cards in the grid, flipping them all the way over and laying them down with the pictures facing up.**
- **The player collects the two cards if the pictures on them are the same (adult matched with young).**
- **HINT – a match is signified by having the same color border.**
- **If there is not a match the two cards are turned back over. If more than one student is playing, the next student can flip two cards over, or the student can keep progressing until all matches are located.**



Dragonfly



Mayfly



Non-biting Midgefly



Predacious Diving Beetle



AndrewWilliams/CritterZone.com



Dobsonfly



Damselfly

